



Harufan Hausa

Week 1 (II)



Lesson Two

Week 1



35 Letters of the Hausa alphabet.

The Hausa Alphabet contains single letters, combinations of two letters and same letters with different sounds

We will explore letters 13-24 in this lesson



Harufan Hausa



**At the end of this lesson,
you should be able to:**

- Pronounce the letters of the Alphabet from h - n
- Pupils should be able to identify each of the letters correctly from h- n
- Play games with the letters of the alphabet from h - n

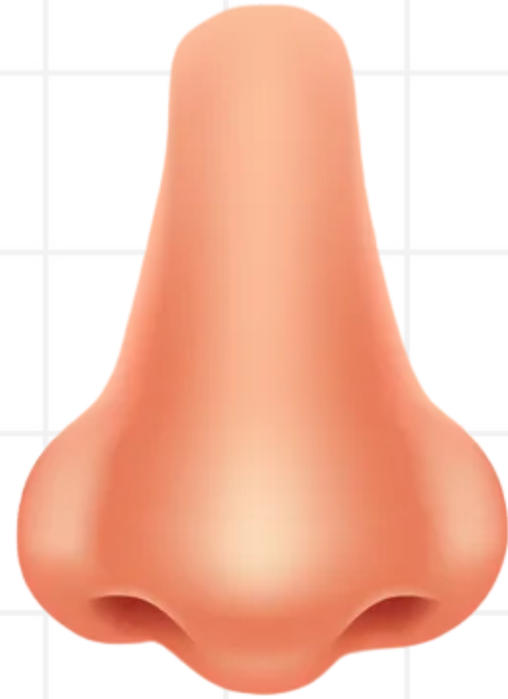


Harufan Hausa



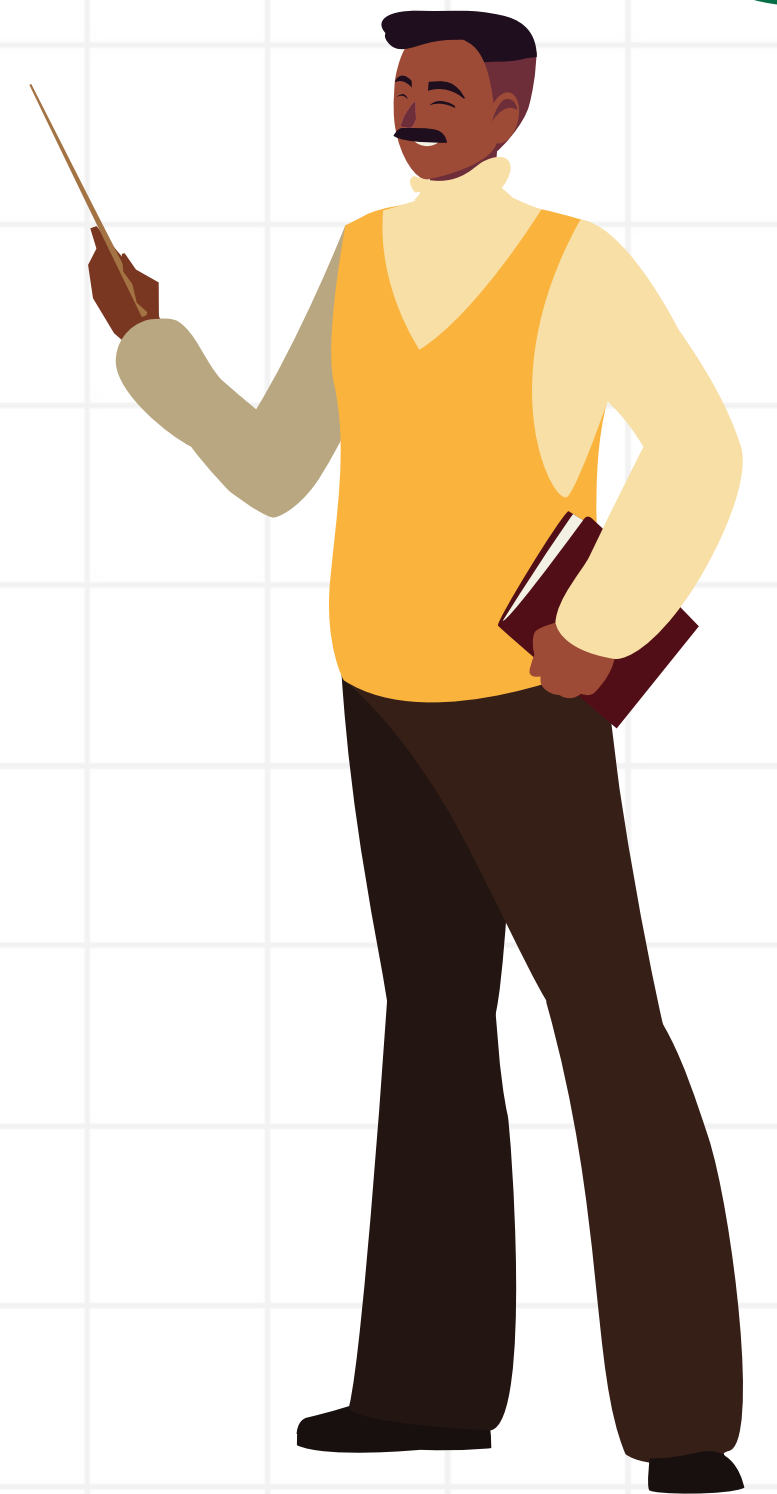
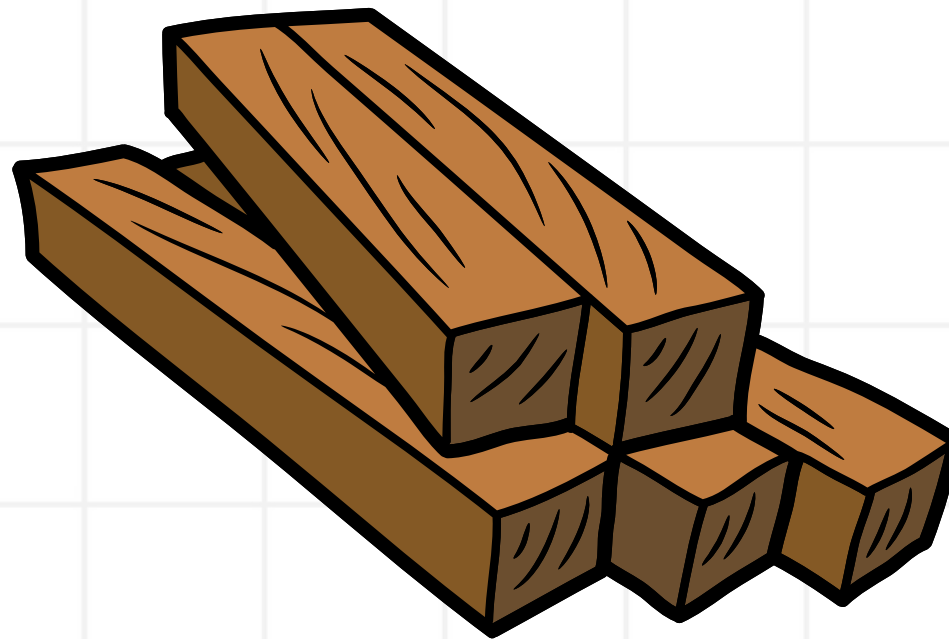
H

**as in Hanci
(Nose)**



I

**as in Itace
(Wood)**



Harufan Hausa



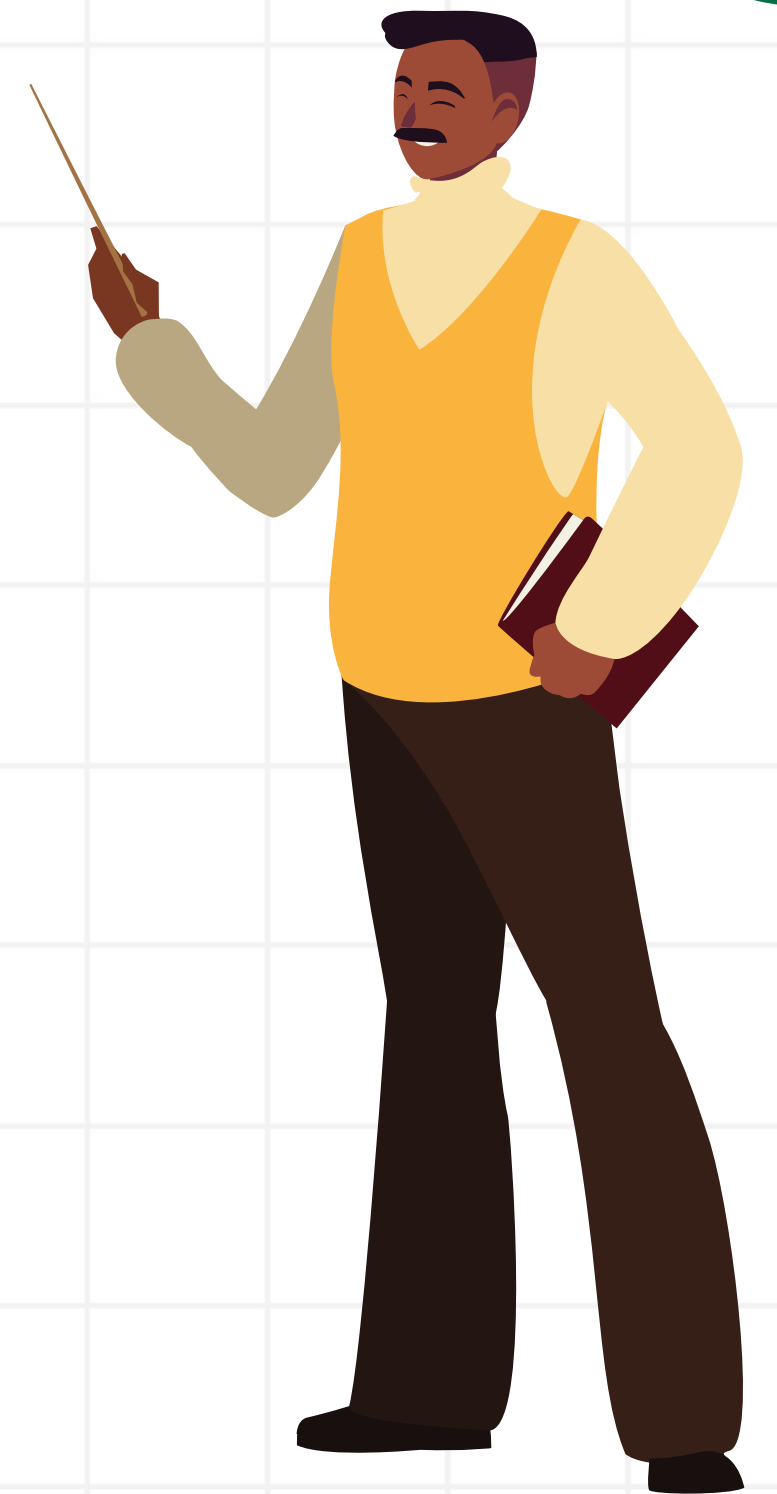
J

**as in Jaka
(Bag)**



K

**as in kalma
(Word)**

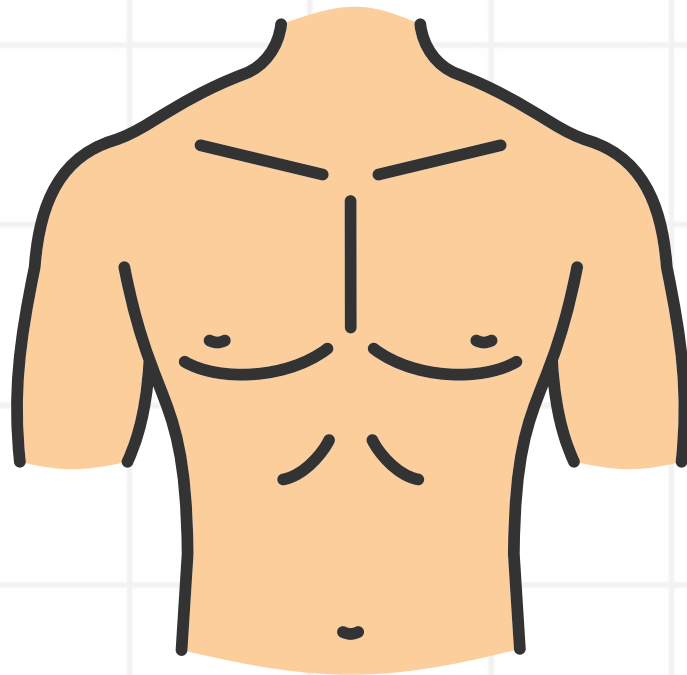


Harufan Hausa



K

**as in Kirji
(Chest)**



Kw

**as in Kwakwa
(Coconut)**

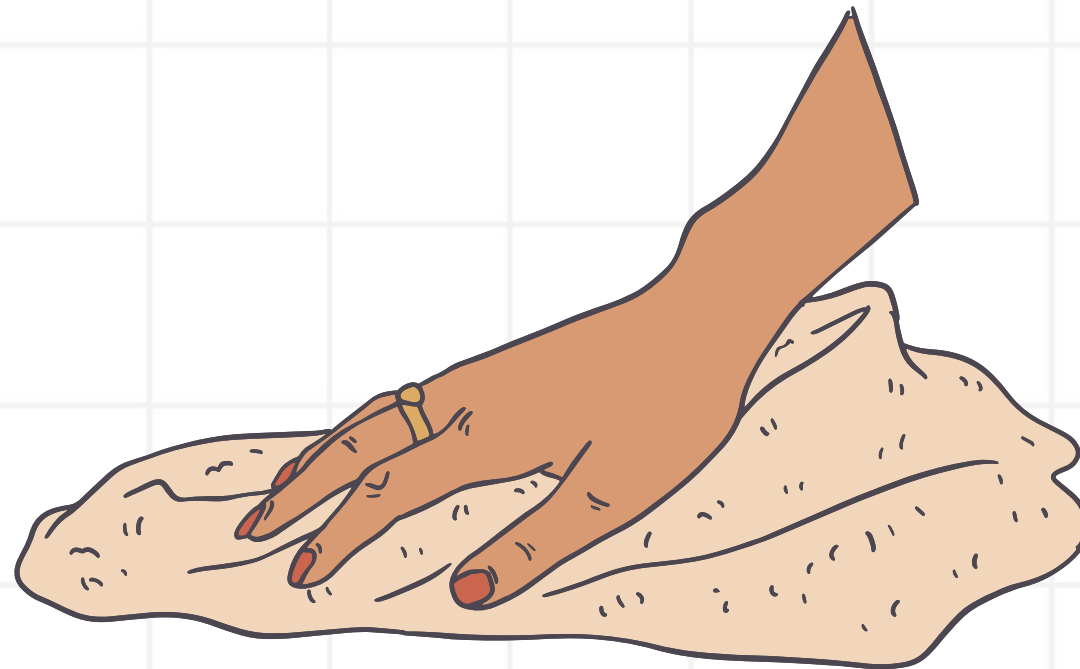


Harufan Hausa



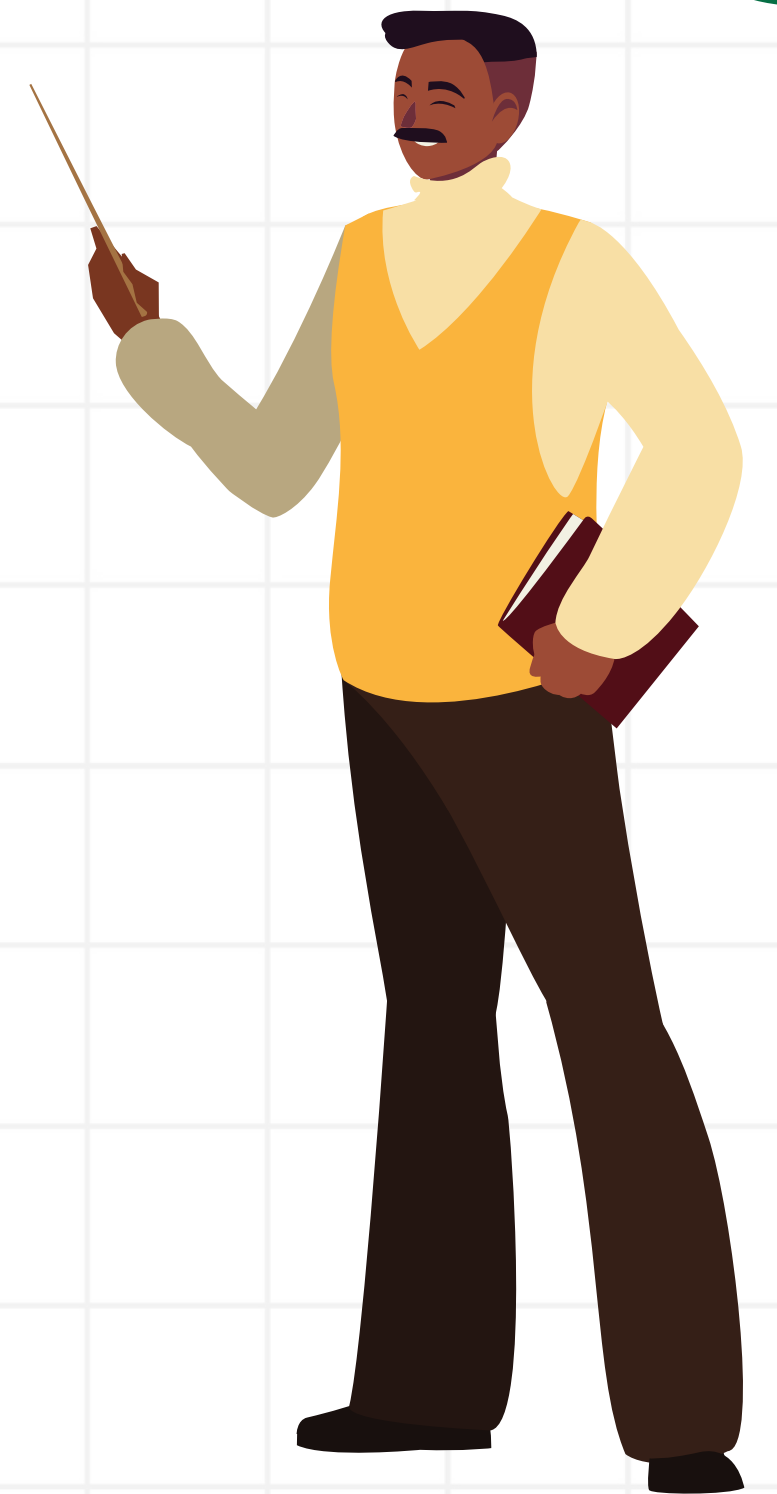
Ky

**as in Kyalle
(Rag)**



Kw

**as in Kwarya
(Calabash)**

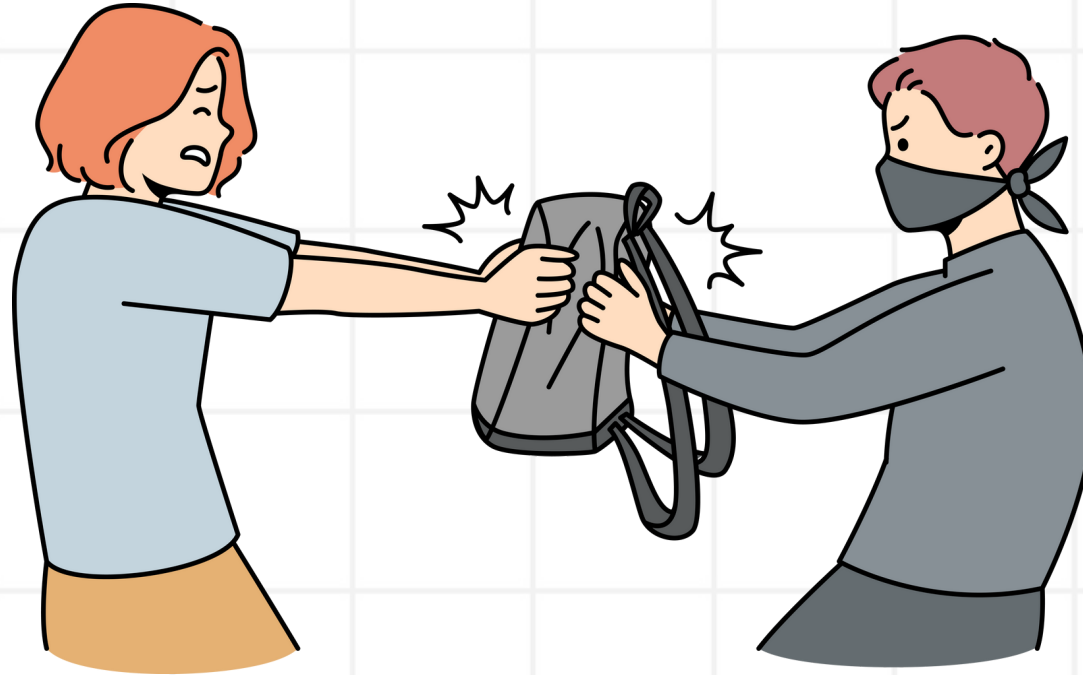


Harufan Hausa



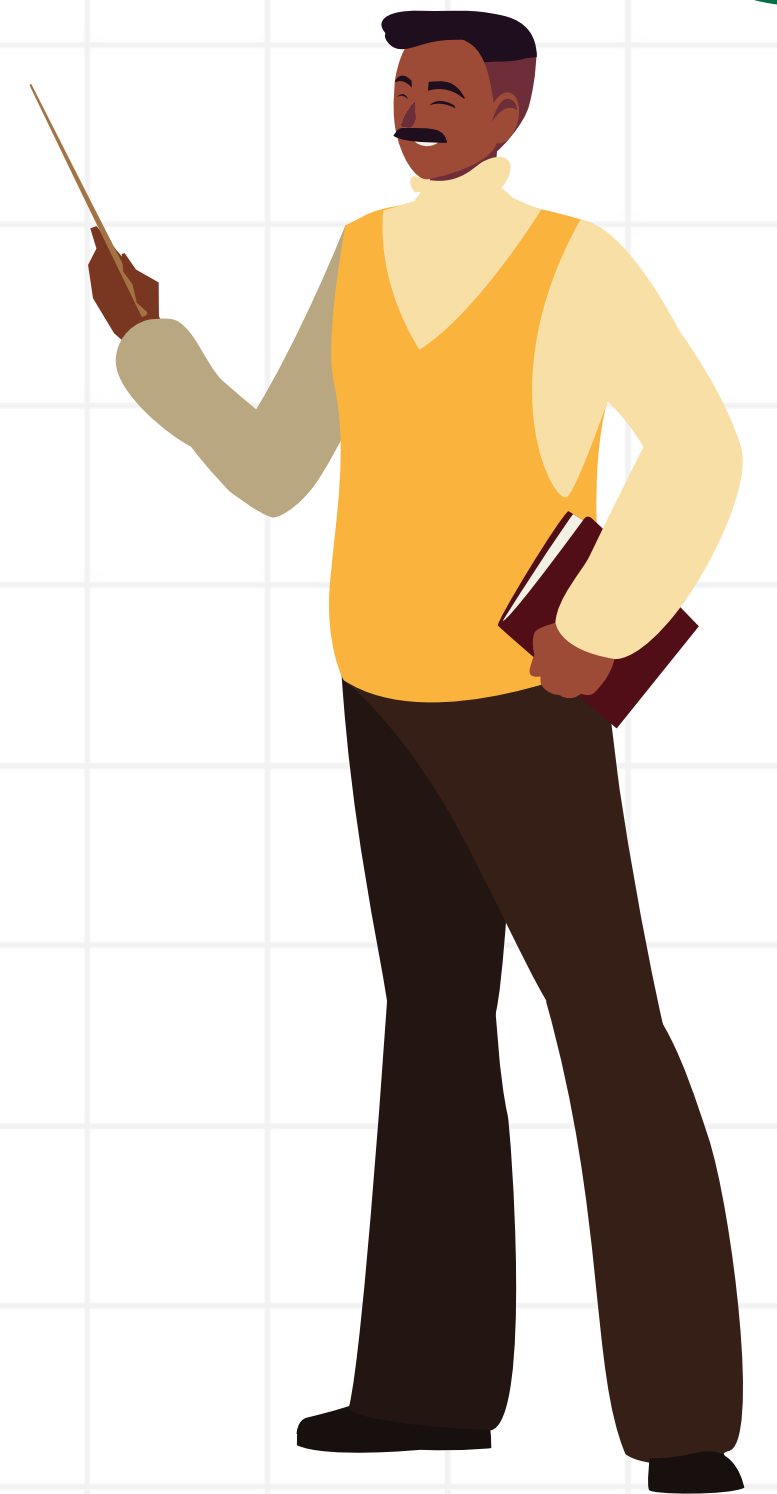
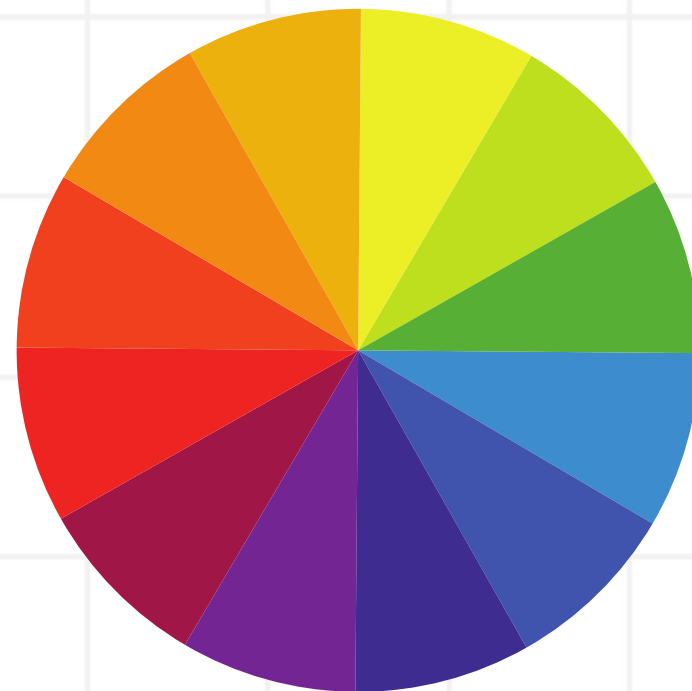
Ky

**as in Kyale
(Leave it)**



L

**as in Launi
(Color)**



Harufan Hausa



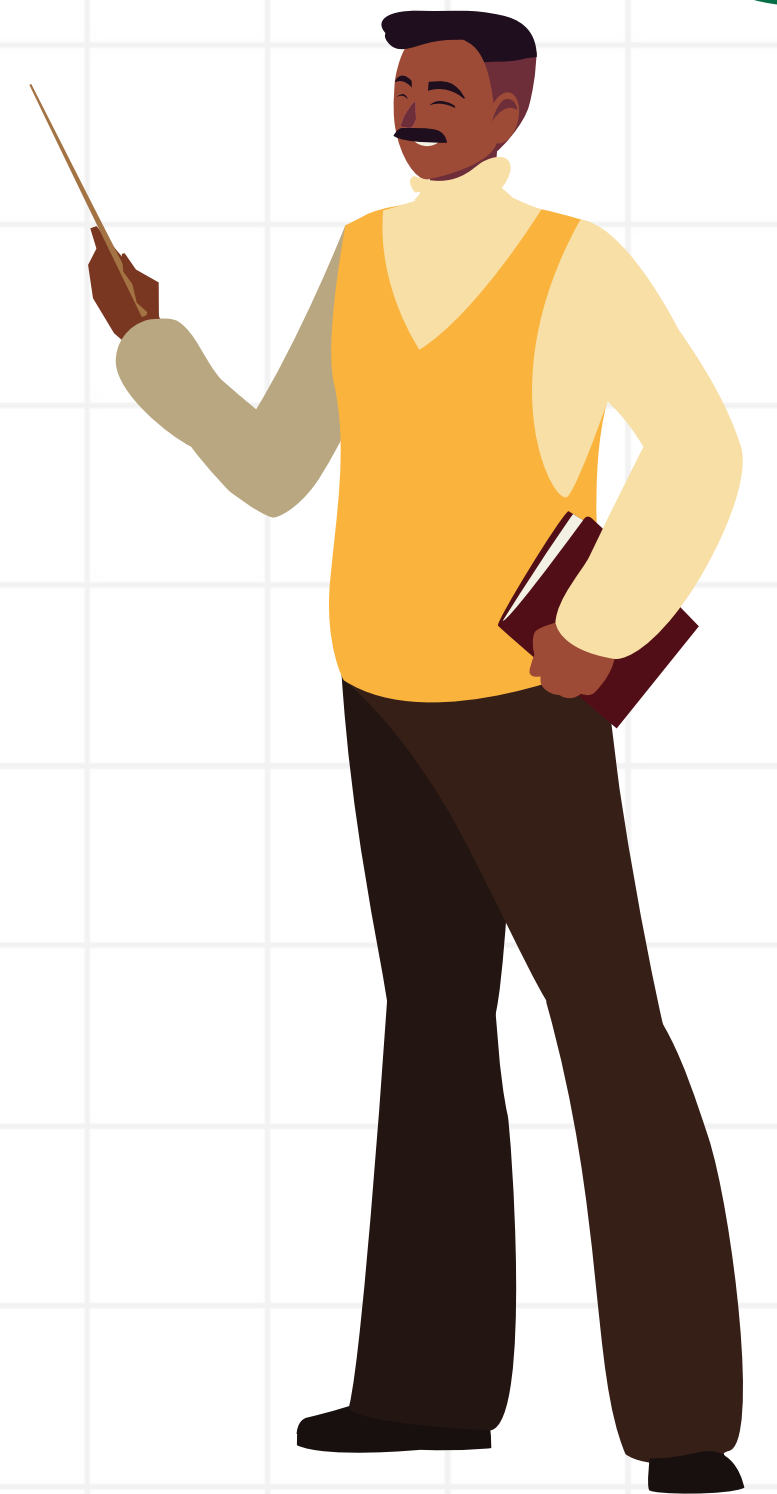
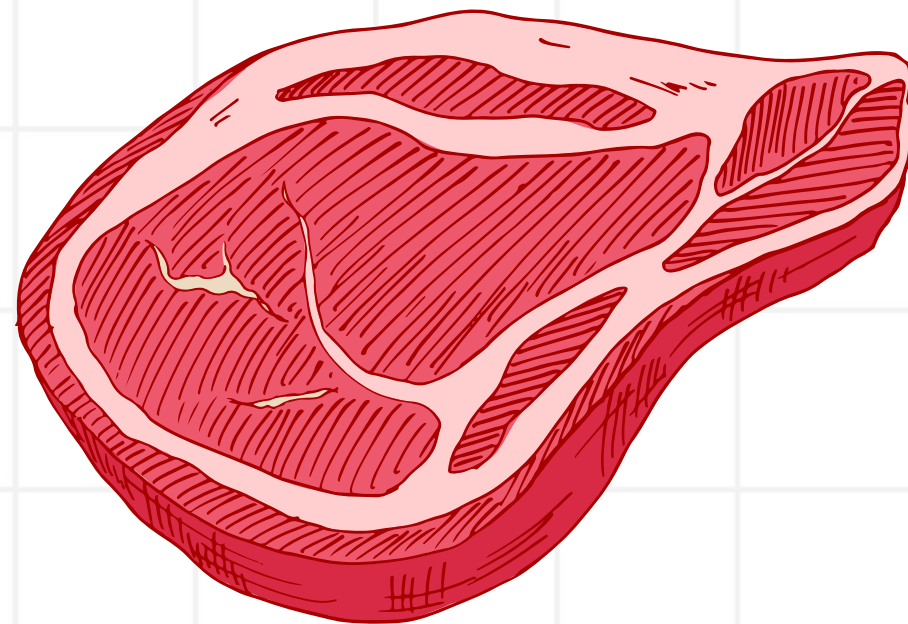
M

**as in Mama
(Mother)**



N

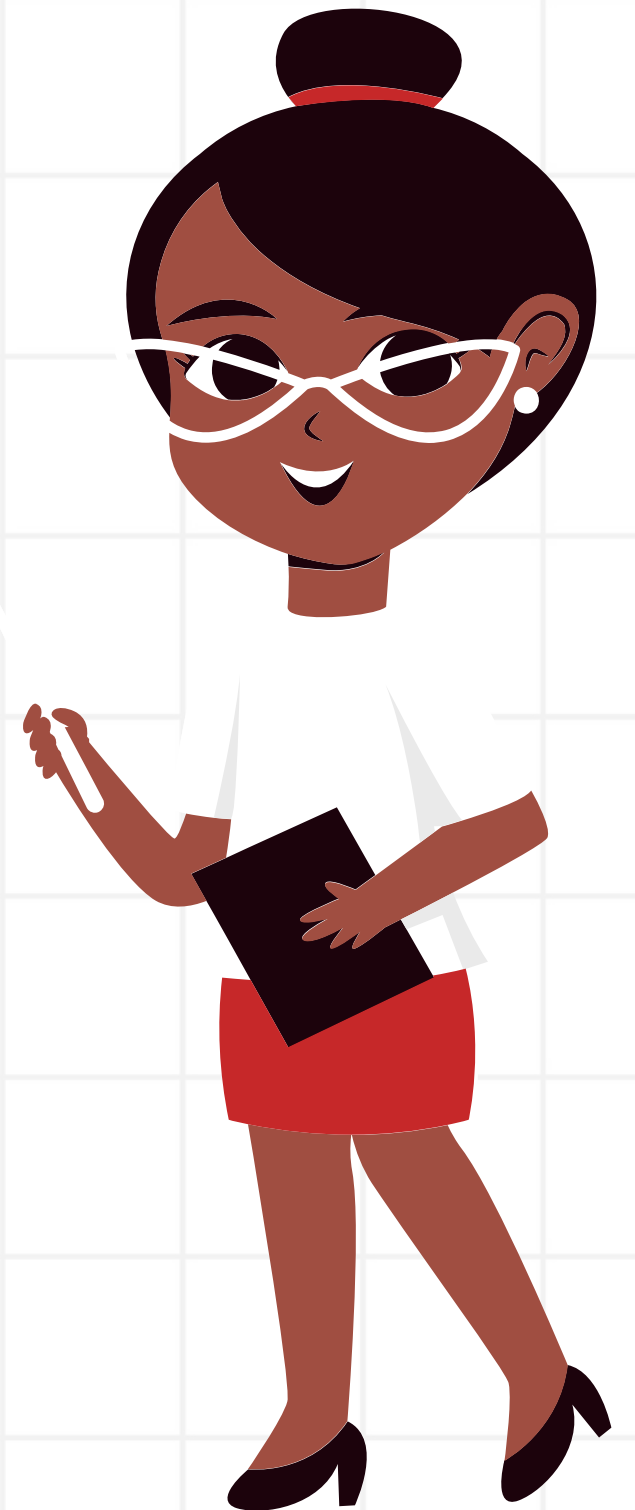
**as in Nama
(Meat)**



Harufan Hausa



| | | | |
|----|----|----|----|
| H | I | J | K |
| K | Kw | Ky | Kw |
| Ky | L | M | N |



Harufan Hausa

| | Hausa |
|----|--------|
| 1 | hanci |
| 2 | itace |
| 3 | jaka |
| 4 | kalma |
| 5 | kirji |
| 6 | kwakwa |
| 7 | kyalle |
| 8 | kwarya |
| 9 | kyale |
| 10 | launi |
| 11 | mama |
| 12 | nama |

Let's Play a Game

| English | Hausa Match |
|----------|-------------|
| color | |
| bag | |
| nose | |
| leave it | |
| mother | |
| meat | |
| calabash | |
| chest | |
| wood | |
| rag | |
| coconut | |
| word | |

